

Specialists in the supply and distribution of electronic and lighting components

2024



Electronic Center S.p.A.
DISTRIBUZIONE COMPONENTI ELETTRONICI

Sistemi di connessione, materiale per il cablaggio, componenti elettronici attivi e passivi, elettromeccanici, per automazione e lighting.

Electronic Center distributes connection systems, wiring materials, active and passive, electromechanical, components for automation and lighting.

www.electroniccenter.it

CHI SIAMO

Electronic Center S.p.A. nasce a Modena nel 1979.

È un distributore di Componenti Elettronici storicamente focalizzato sulla connessione, e recentemente orientato al mercato del Lighting.

Tutto il personale di Electronic Center S.p.A. coniuga un'elevata conoscenza dei componenti proposti, ad un servizio impeccabile ed affidabile.

La nostra forza è insita nella flessibilità, nelle soluzioni promosse e nella disponibilità dei prodotti gestiti in pronta consegna, piuttosto che con un profilo di stock personalizzato. Per noi il magazzino è una risorsa essenziale e costituisce uno degli ambiti in cui investiamo costantemente ogni anno.

Automotive, Ferroviario, Automazione e Medica sono, nell'ambito del cablaggio e dell'assemblaggio di schede elettroniche, i principali segmenti di mercato a cui Electronic Center S.p.A. si rivolge. Nel mondo del Lighting ci rivolgiamo ai grandi OEM, ed a tutte le eccellenze del rinomato design italiano.

Electronic Center S.p.A. può vantare una rete di vendita capillare formata da persone esperte che grazie ad una profonda competenza tecnica possono, in fase di progettazione, supportare il cliente nell'individuazione e nell'omologazione del componente più idoneo all'applicazione specifica.

WHO WE ARE

Electronic Center S.p.A. Founded in Modena in 1979.

It is a distributor of Electronic Components historically focused on connection, and recently oriented to the Lighting market.

The entire Electronic Center S.p.A. staff combines a high knowledge of the promoted components, with a reliable service.

We offer a high flexibility in the promoted solutions, and in the availability of managed products in prompt delivery, rather than with a personalized stock profile: warehouse is an essential resource and we constantly invest in it, year after year.

Automotive, Railways, Automation and Medical are, in the field of harness wiring and assembly of electronic boards, the main market segments to which Electronic Center S.p.A. are addressed. In Lighting industry we follow main OEMs, as well all the excellences of the renowned Italian design.

Electronic Center S.p.A. can boast a capillary sales network made up of experienced people who, thanks to a deep technical expertise, can, during the design phase, support the customer in the identification and approval of the most suitable component for specific application.



Ci piace considerarci

“specialisti nella connessione e nell’optoelettronica”.

Riconosciuti dai marchi più prestigiosi a livello internazionale. Il nostro obiettivo: essere il miglior partner dei nostri clienti.

We like to consider ourselves as

“connection specialists and the optoelectronics”.

Recognized by the most prestigious international brands. Our goal: being recognized by our customers as first class service partner.



OUR BRANDS

A

Amphenol Industrial

Apex Tool

Weller
Erem

ATE

ALVIT

Ae Optics

B

Bolb Inc.

C

Cuvée Systems

CREE-LED

D

Done

E

Eaton

Souriau

El Bag

H

Hellermann Tyton

J

JDD Tech

L

Led BRT

LEDiL

Luminus

M

Molex

FTC

Flamar®

GWconnect™

Moso

P

Panduit

Phoenix Contact

Pancon

Piergiacomi

Peters

R

Rafi

Rolec

S

Samsung

Shineon

Sosen Led Drider

Stanley

T

TE Connectivity

Agastat

Alcoswitch

Amp

Axicom

Buchanan Terminal Blocks

Corcom

DEUTSCH

ELCON

ENTRELEC

HTS

KILOVAC

Kissling

OEG

Potter & Brumfield

Raychem

SCHRACK

Techno

Teko

Tridonic

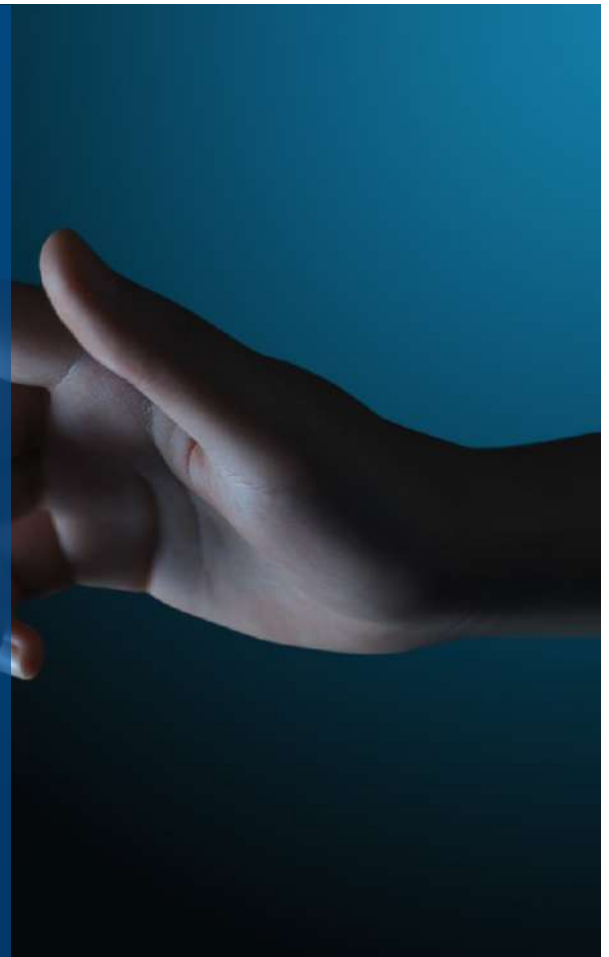
W

Wcon

Wisilica

Y

YSD



Elevati standard qualitativi

Distribuiamo i principali marchi per connessione e lighting nel panorama mondiale.

I nostri prodotti soddisfano i più alti standard di qualità, rispondendo alle principali normative a livello internazionale.

Product quality

We distribute the world's leading connection and lighting brands.

Our products meet the highest quality standards and comply with the most important international regulations.



PRODUCTS FOR CONNECTION AND WIRING



AUTHORIZED DISTRIBUTOR



LIGHTING PRODUCTS





Connectors



Tooling



Electromechanics



Lighting



Enclosures





TABLE OF CONTENTS

BY PRODUCT TYPE

Connectors	By Market Segment										
	TE Connectivity	Molex	Amphenol	Phoenix Contact	Souriau	Raychem	Panduit	Hellermannnyton	Techno	LEDiL	WCON
Automotive	•	•	•								•
Backplane	•	•	•	•	•						•
Board to board	•	•	•	•							•
Device to board	•	•	•	•	•						
Industrial	•	•	•	•	•				•		
Lighting	•	•	•	•	•				•	•	
RJ45	•	•	•	•							
USB	•	•	•	•							
FO	•	•	•		•						
Vent			•								
Audio			•								
Antennas	•	•									
Terminal blocks	•		•	•							•
Terminal and splices	•	•	•	•	•	•	•				
Tubing				•		•	•	•			
Relays	•			•							
Labels				•		•	•	•			

Tooling	By Market Segment									
	Apex tool Weller/ Erem	Hellermannnyton	Molex	Panduit	Phoenix Contact	Piergiacomini	Souriau	TE Connectivity		
•	•	•	•	•	•	•	•	•		

Relays	TE Connectivity
Relays	•

Filters	TE Connectivity
Emi	•

LED	By Market Segment														
	BrightLed	Stanley	Samsung	Shineon	Prolight	Tridonic	BOLB Inc.	Luminus	CREE-LED	W/Silica	MOSO	Sosen	YSD	ALVIT	Cuveè System
Led	•	•	•	•	•	•	•	•	•						
Led modules			•			•									
Led drivers						•			•	•	•	•	•	•	•
Led software						•			•						

Resin	By Market Segment		
	Raychem	Hellermannnyton	Peters
Conformal coating			•
Casting compounds		•	•
Led related conformed coating		•	•
Led related casting compounds		•	•

Enclosures	By Market Segment							
	Tyco	Molex	Amphenol	Techno	Phoenix	Teko	Rolec	Elbag
Aluminium		•			•	•	•	
Plastic	•		•	•	•	•	•	•



CONNECTORS

Automotive & Transportation Connectors	Amphenol	Hellermann Tyton	Molex	Panduit	Phoenix Contact	Souriau	TE Connectivity	WCON	Raychem
Board-to-Board	•		•		•	•	•	•	
Circular - Metal	•		•		•	•	•		
Circular - Sealed	•		•		•	•	•		
Circular - Un sealed	•		•		•	•	•		
EV / HEV - High Power	•		•		•		•		
EV / HEV - Charging Couplers	•				•		•		
Fibre Optic Products	•		•			•	•		
ISO - Agricultural / Trailer Connectors	•						•		
Memory Card			•				•		
Rail - High Reliability Power	•				•	•	•		
Rail - Signal Connectors	•				•	•	•		
Relay Holders					•		•		
RF - Coax / Microwave	•		•			•	•		
RF - FAKRA / HSD			•				•		
Rectangular - Heavy - Duty	•		•		•		•	•	
Rectangular - Sealed	•		•		•		•	•	
Rectangular - Unsealed	•		•		•		•	•	
Wire & Cable			•						•
Wire Management - Fixing & Identification		•		•	•				•



CONNECTORS

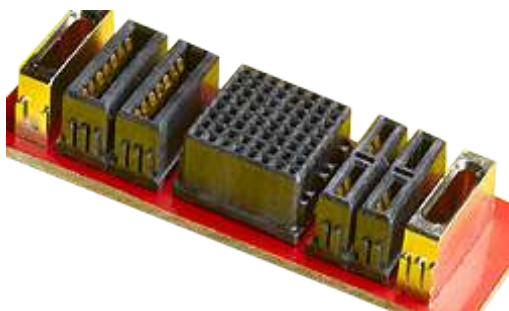
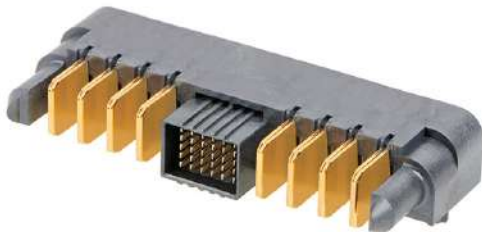
Backplane, Board-To-Board & Device-To-Board	Molex	Souriau	TE Connectivity	WCON	Amphenol
Backplane					
10 Gb / s+ Solutions	•		•		
2.00mm	•		•	•	
Assemblies (Backplane)	•	•	•	•	
ATCA/ MicroTCA	•		•		
Cable Assemblies	•	•	•	•	•
Card Edge	•		•		
Compact PCI	•		•		
Fibre Optic	•	•	•		
PCI Express	•		•		
XLR					•
RF / Ganged RF	•	•	•		
SCA-2	•				
Device-To-Board					
DIMM	•		•		
DIP			•		
PCMCIA	•		•		
PGA	•		•		
PLCC			•		
RIMM / DIMM / SIMM	•		•		
SIP			•		
SO DIMM & RIMM	•		•		
Test / Burn-In Sockets			•		





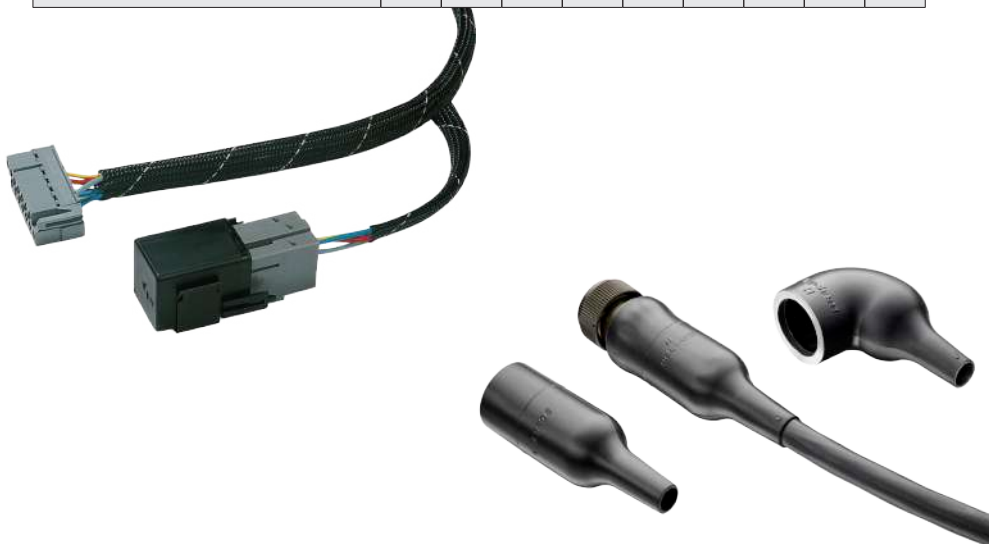
CONNECTORS

Backplane, Board-To-Board & Device-To-Board	Molex	Souriau	TE Connectivity	WCON	Phoenix Contact	Amphenol
Board-To-Board						
Ball Grid Array (BGA)	•			•		
Battery Connectors	•		•		•	•
Board Stacking	•		•	•	•	•
Breakaway Headers	•		•	•		
Compression	•		•			
Mezzanine / FPC	•		•	•		
Power	•	•	•	•	•	•
SCSI	•		•			
Shunts			•	•		



CONNECTORS

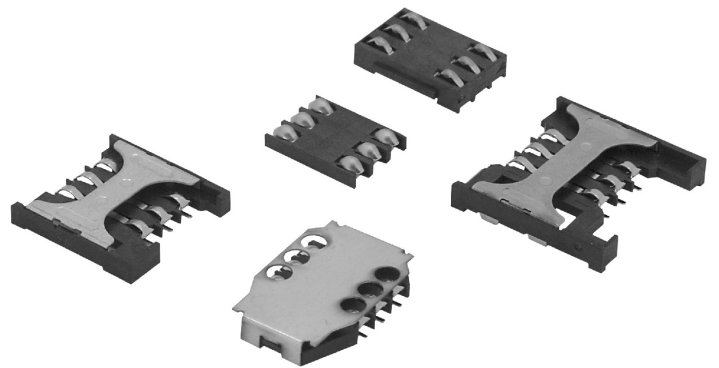
Cable & Wire Management	HellermannTyton	Molex	Panduit	Phoenix Contact	Souriau	TE Connectivity	JDD	Amphenol	Raychem
Cable & Wire									
Cable Assemblies		•		•	•	•		•	
Coaxial (RF)		•				•		•	
EV / HEV - High Power				•		•		•	
Flat flex (FCC, FPC)		•				•		•	
Single Conductor (Wire)						•		•	
Cable & Wire Management									
Cable Braids	•		•			•	•		•
Cable Ties	•		•						
Clamps and Clips	•		•						
Cold Shrink Tape, Tubing	•		•			•	•		•
Heat Shrink Boots and Tubing	•		•	•			•		•
Identification - Label and markers	•		•	•					•
Solid Tubing and Sleeving	•		•	•			•		•
Spiral Wrap	•		•				•		
Splice enclosures and protection	•								





CONNECTORS

Memory Card Connectors	Molex	TE Connectivity
CompactFlash™	•	•
DDR / DDR2 / Mini DDR2 / DDR3	•	•
Express Card	•	•
Memory Stick / Duo	•	•
Micro SD	•	•
Mini SD	•	
MMC	•	
PC Card / CardBus	•	•
PCMCIA	•	•
SD (Secure Digital)	•	•
Smart Card (SIM)	•	•
xD	•	





CONNECTORS

Military & Avionic Specifications	Souriau	TE Connectivity
EN2997	•	•
EN3645	•	•
EN4165		•
HE301	•	•
HE308	•	•
MIL - 22992		•
MIL - DTL - 26482 Series 1 Crimp	•	•
MIL - DTL - 26482 Series 1 Solder	•	•
MIL - DTL - 26482 Series 2	•	•
MIL - DTL - 28840 Shipboard		•
MIL - DTL - 38999 Series I & II	•	•
MIL - DTL - 38999 Series III	•	•
AS50151		•
MIL - DTL - 55302		•
MIL - C - 81511		•
MIL - DTL - 83723		•
Hermetics	•	•
VG95234	•	•
VG95328	•	•
VG96912	•	•

Specialty Connectors & Accesories	Souriau	TE Connectivity
Backshells & Accessories	•	•
Coax / R	•	•
Contacts	•	•
D-Subminiature	•	•
Discrete Sockets		•
Micro D	•	•
Rack & Panel	•	•
Sealed Plugs	•	•
Terminal Blocks		•
Terminals	•	•
Tools	•	•

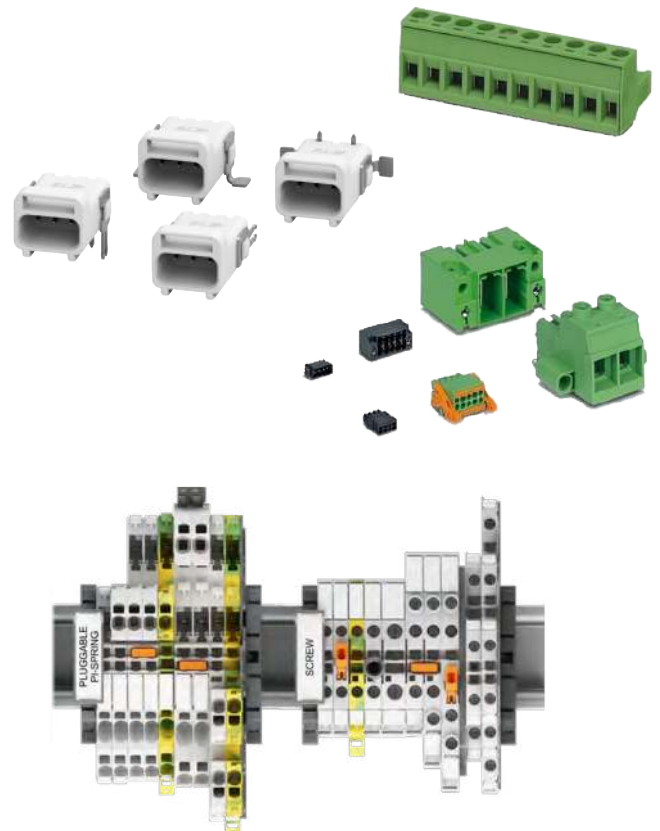




CONNECTORS

Wire-To-Board/ Wire-To-Wire	WCON	Techno	Molex	Phoenix Contact	Souriau	TE Connectivity	Pancon	Amphenol
1.25mm	•		•			•		
1.27mm	•		•			•		•
2.00mm	•		•	•		•		
2.50mm	•		•	•		•		
2.54mm	•		•	•	•	•	•	•
3.00mm	•		•			•		
3.50mm			•			•		•
3.81			•			•		•
3.96mm	•		•			•	•	•
4.00mm			•			•		
4.20mm	•		•			•		
5.00mm			•	•		•		•
5.08mm			•	•	•	•		
6.35mm			•	•		•		
7.50mm			•	•		•		
7.62mm	•		•	•		•		
9.00mm						•		
10.00mm			•	•		•		
Bus Bar	•		•	•		•		•
Cable Assemblies	•	•	•	•	•	•		•
FFC / FPC	•		•			•		
IDC Discrete Wire	•			•		•	•	
IDC / Mass Termination	•		•	•		•	•	
Power	•	•	•	•	•	•		•
SATA / SAS / Mini SATA	•		•			•		
SCSI I, II, III	•		•			•		
M8/M12/M5				•		•		•

Terminal Blocks	Amphenol	Molex	Phoenix Contact	TE Connectivity	WCON
2.54mm	•	•	•	•	•
3.50mm	•	•	•	•	•
3.81mm	•	•	•	•	•
5.00mm	•	•	•	•	•
5.08mm	•	•	•	•	•
7.50 mm			•	•	
7.62 mm			•	•	
Interface Modules	•		•	•	
Rail Mounted	•		•	•	
Screw Terminal	•		•	•	
Spring Clamp	•		•	•	
Terminal blocks				•	



TOOLING

Tooling	Apex Tool Weller/ Erem	Hellermann tyton	Molex	Panduit	Phoenix Contact	Piergiacomi	Souriau	TE Connectivity	Raychem
Hand Tool	•	•	•	•	•	•	•	•	
Applicator			•	•				•	
Wiring machine					•			•	
Soldering	•								
Desoldering	•								
Rework	•								
Filtration	•								
Precision tool	•								
Solder pot	•					•			
Printer		•		•	•				•
Automatic cable tyn		•		•					
Heat shrink tooling									•





ELECTROMECHANICAL

Relays & Circuit Breakers

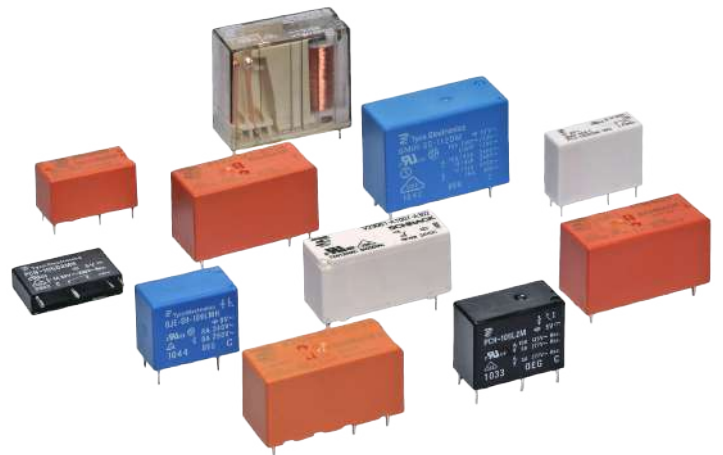
TE Connectivity

Relays

Automotive	•
Communications	•
Contactors	•
Control	•
DIN Rail Mounted	•
Force Guided Contact	•
General Purpose	•
High frequency relays	•
High voltage	•
Industrial DC & AC	•
Input / Output Modules	•
Miniature PCB	•
Panel / Plug-in	•
Power	•
Safety	•
Signal	•
Sockets	•
Solid state relays	•

Circuit Breakers

Magnetic Circuit Breakers	•
Thermal Circuit Breakers	•



ELECTROMECHANICAL

Switches	TE Connectivity	Rafil
DIP	•	
Emergency Stop		•
Industrial	•	•
Key Switch		•
Knob switch	•	
Pushbutton	•	•
Pushwheel / Thumbwheel	•	•
Rotary	•	•
Safety	•	•
Selector		•
Slide	•	
Snap Action	•	
Tactile	•	•
Toggle / Paddle	•	•

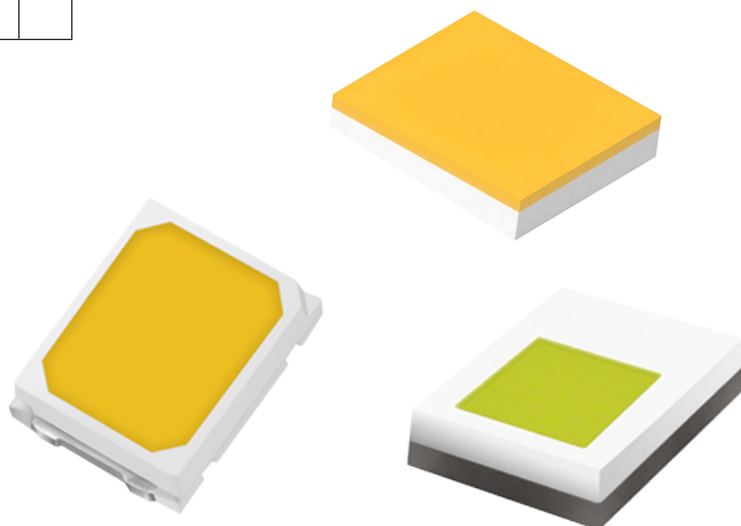
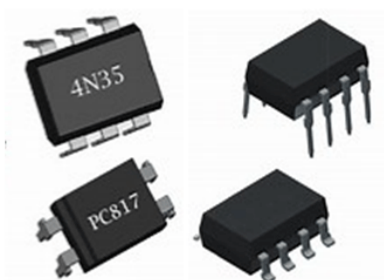




LIGHTING

Optoelectronics	BrightLed	Stanley	Samsung	Shineon	Prolight	Luminus	CREE-LED
Optocouplers							
Optocouplers	•						
Infrared Components							
Infrared Emitters	•	•			•	•	
Photo Detectors (Diode)	•						
Photo Detectors (Transistor)	•	•					
Sensors							
Proximity		•					
Reflective Sensors		•					
Visible Leds (Standard)							
Chip Leds (White + Color)	•	•					
Middle Power Led (White & Color) <1W	•	•	•	•	•		•
High Power Led (White & Color) >1W			•	•	•		•
RGB & RGBW Leds <1W	•			•	•		•
RGB & RGBW Leds >1W					•		•
Horticulture Leds			•	•	•	•	•
Seven Segment Display	•						
Dot Matrix Display / Light Bar Display	•						
PTH LEDs	•						

Optoelectronics	BrightLed	Stanley	Samsung	Shineon	Prolight	Tridonic	Bolb Inc.	Luminus	CREE-LED
Visible Leds (General Lighting)									
Middle Power Led (White) <1W	•		•	•	•			•	•
High Power Led (White) >1W			•		•			•	•
Middle Power Led (Color) <1W				•	•			•	•
High Power Led (Color) >1W			•		•			•	•
COB			•	•	•	•		•	•
Ultra High Power LED Special (White)								•	
Ultra High Power LED Special (Color)								•	
Visible Leds (Automotive)									
Middle Power Led (White) <1W		•	•		•				
High Power Led (White) >1W		•	•		•				
Middle Power Led (Color) <1W		•	•		•				
High Power Led (Color) >1W		•	•		•				
UV Leds									
UVA	•	•		•	•			•	
UVB				•					
UVC	•	•		•	•		•	•	



LIGHTING

Led Driver	Tridonic	Moso	Sosen	YSD	Cuvée System	Done	ALVIT
Constant Voltage IP20	•	•	•	•		•	•
Constant Voltage IP6x	•	•	•	•		•	•
Constant Current IP20	•	•			•	•	•
Constant Current IP6x	•	•	•	•	•	•	•
In track 48 V	•				•		
DC/DC							•



Emergency Lighting	Tridonic	ALVIT
Combined emergency Lighting LED Driver	•	•
Emergency Lighting LED Driver	•	•
Emergency LED Light Engines	•	•
Emergency Lighting Controls	•	•
Emergency Lighting Batteries	•	•

Lens	AeOptic	LEDiL
Lens Custom	•	•
Lens Standard		•
Reflector		•





LIGHTING

Led Modules	Tridonic	Samsung	Custom by E.C. Competence Center
Linear (rigid & flexible)	•	•	•
Area, Square, Rectangular	•	•	•
Round	•	•	•
Tunable White	•	•	•
Complete Downlight Engine	•		•
Direct AC Round		•	•
Outdoor Modules	•	•	•
Neon rope			•



IoT Control & Sensors	Tridonic	Wisilica
IoT BLE Controllers	•	•
IoT BLE Drivers	•	•
IoT BLE In track 48V	•	•
IoT BLE Sensors	•	•
IoT BLE Switches	•	•
IoT BLE Gateways	•	•
IoT BLE Modules		•

Sensors	Tridonic
Intelligent PIR Switch	•
DALI Sensor	•
DALI control module	•
DALI control unit	•
DALI Power Supply	•
DALI Interface	•
DALI Actuator	•



ENCLOSURES

Enclosures	TE Connectivity	Molex	Amphenol	Techno	Phoenix	Teko	Rolec	Elbag
Automotive	•		•	•	•			
Industrial		•	•	•	•	•	•	•
Lighting				•	•	•		•
Domotic					•	•		•
Electronic					•	•	•	•
Automation				•	•		•	•





WHERE WE ARE

We are located in:

Emilia-Romagna,
Piemonte,
Lombardia,
Veneto,
Liguria,
Toscana,
Marche,
Centro/Sud
Tunisia



GET IN TOUCH

Strada Nazionale Canaletto Sud, 276
41122 - Modena - Italy

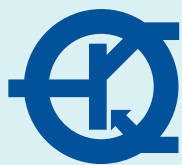
Tel. +39 059.3162111

Fax. +39 059.313225

E-mail. info@electroniccenter.it
www.electroniccenter.it

UFFICIO DI ASSAGO:

Via Giuseppe de' Vecchi 7/G
Tel. +39 02 82196139



Electronic Center S.p.A.



 **SCAN ME**