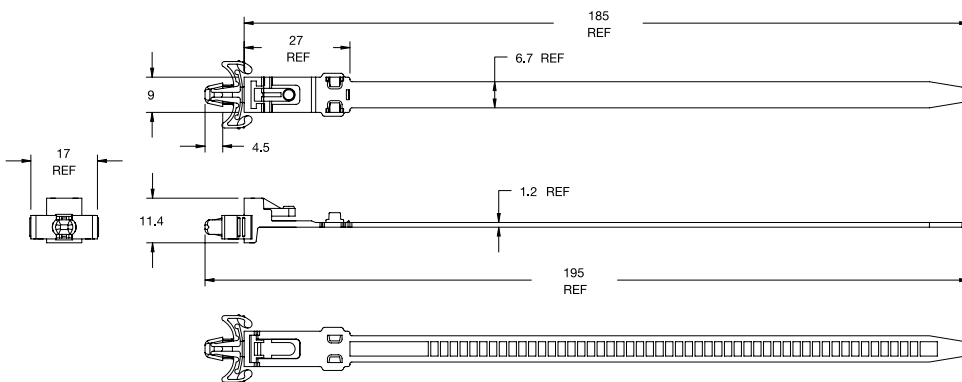
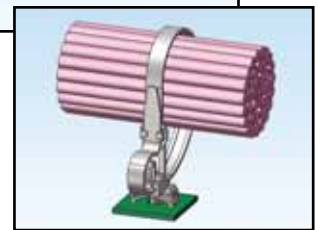
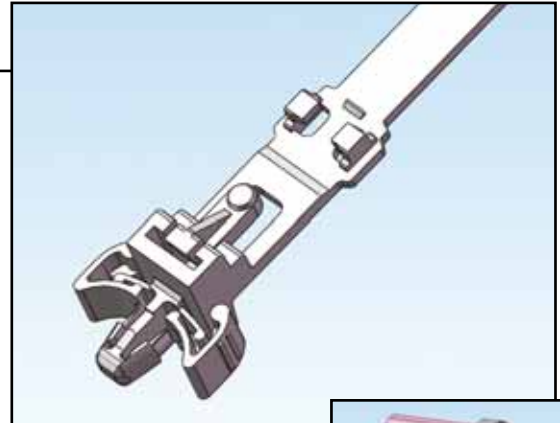


Introducing the **WIT-40LAR**

Releasable Cable Ties

Features and Benefits

- Eliminates multiple parts by incorporating a cable tie and holder into one part
- Easily pressed and locked into a pre-drilled hole
- Easily removed from panel by pinching the "wings"
- Cable tie is releasable and reusable allowing the tie to be released and reinserted for multiple uses
- Retaining tab secures unused strap eliminating the need to cut off the extra strap
- Complies with the WEEE Initiative



Markets

- Appliance
- Consumer Electronics
- Telecommunications
- Electrical
- Medical Equipment

Part No.	Min. Loop Tensile Strength kg.	Max Bundle Dia	Hole Dia	Panel Thickness	Color	Material	Standard Pack
WIT-40LAR	18	50	4.8±.08	0.5-2.3	Black	Nylon 6/6, RMS-01	1,000

Other colors and materials are available by special order.

Other Related Richco Product Solutions



WITS



SRRCT



TOAH



WIT-18RA



WIT-30XAR



WIT-RT

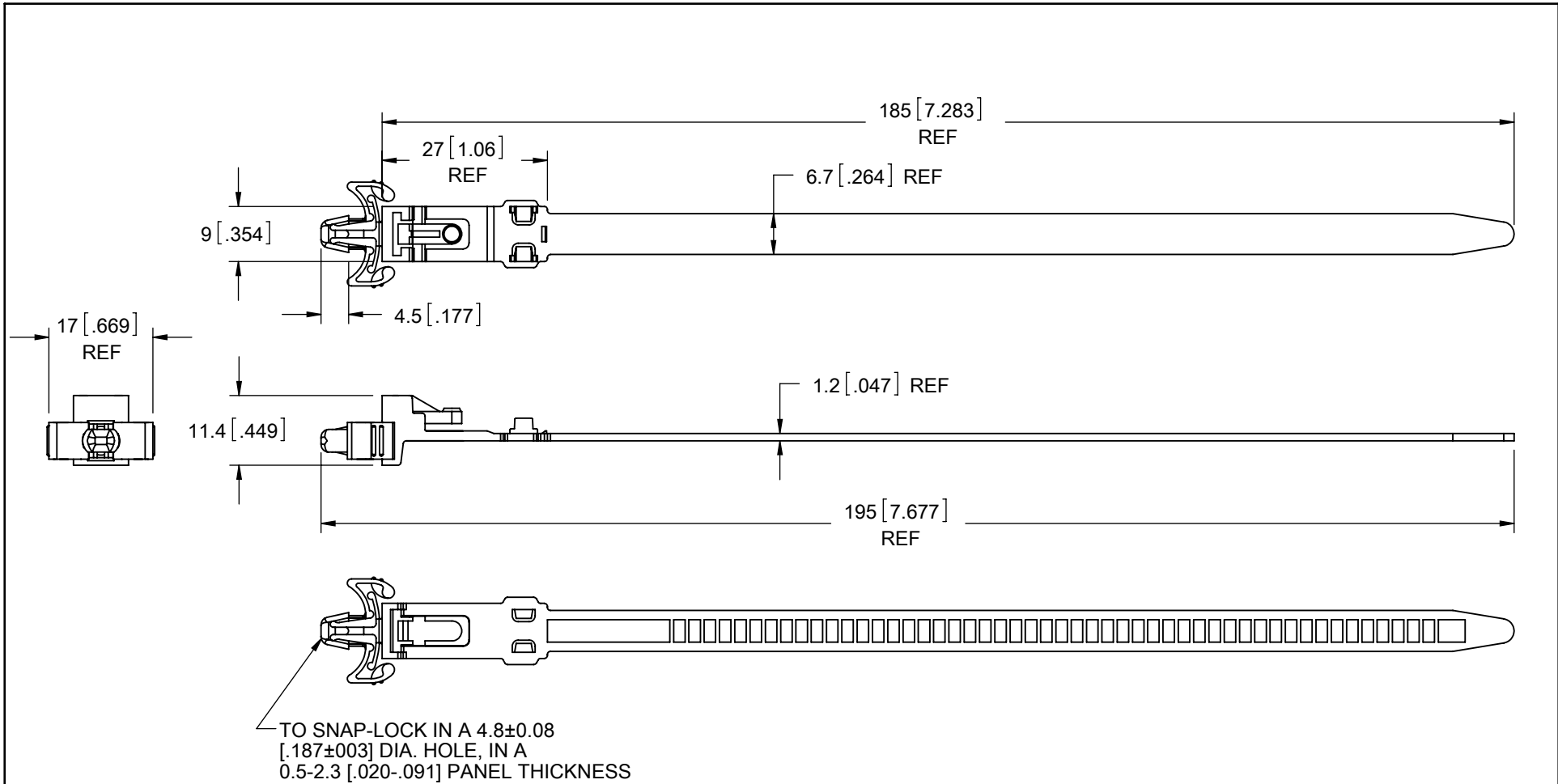


FOR FURTHER INFORMATION AND FREE SAMPLES PLEASE CONTACT YOUR LOCAL RICHCO OFFICE

Richco UK (Int'l HQ) Tel: (44) 1474 327527
 Richco Benelux Tel: (31) 334556262
 Richco Germany Tel: (49) 8171 43280
 Richco Finland Tel: (358) 925221500

Richco France Tel: (33) 47208 7140
 Richco Spain Tel: (34) 90222 2250
 Richco Italy Tel: (39) 051 6325 266
 Richco Sweden Tel: (46) 845 99800





NOTES:

1. MATERIAL: NYLON 6/6 UL 94 V-2 (RMS-01), COLOR BLACK.
 -NYLON 6/6 UL 94 V-0 (RMS-75), COLOR NATURAL, AVAILABLE BY SPECIAL ORDER.
 TO ORDER ADD "-V0" TO PART NO.
 -UV STABILIZED NYLON (RMS-46), COLOR BLACK. AVAILABLE BY SPECIAL ORDER.
 TO ORDER ADD "-UVB" TO PART NO.
2. MIN LOOP TENSILE: 40 LBS.
3. MAX. BUNDLE DIA. 50 mm [1.97]
4. ALTERNATE UNITS FOR REFERENCE ONLY.

A		RELEASED FOR PRODUCTION	SK	12/19/07	TITLE: RELEASABLE ARROW TIE						DWG IN mm [IN]	
REV.		DESCRIPTION	ENGR.	DATE	CREATED USING SOLIDWORKS	FILE #: WIT-40LAR	DWN: SK	APP: S.K.	FINAL			
					GENERAL TOLERANCE UNLESS OTHERWISE NOTED	SHEET: 1 OF 1	SHEET SIZE: A	DT: 12/19/07	CHKD: D.Z.	PART #	PRINT TYPE	
					±0.25 ANG.=±1°	RE: RICHCO, INC.	RICHCO, INC. ENG@RICHCO-INC.COM (773) 539-4060		WIT-40LAR		CA	