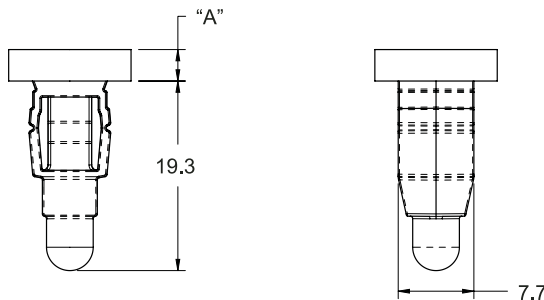
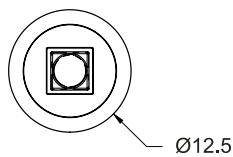
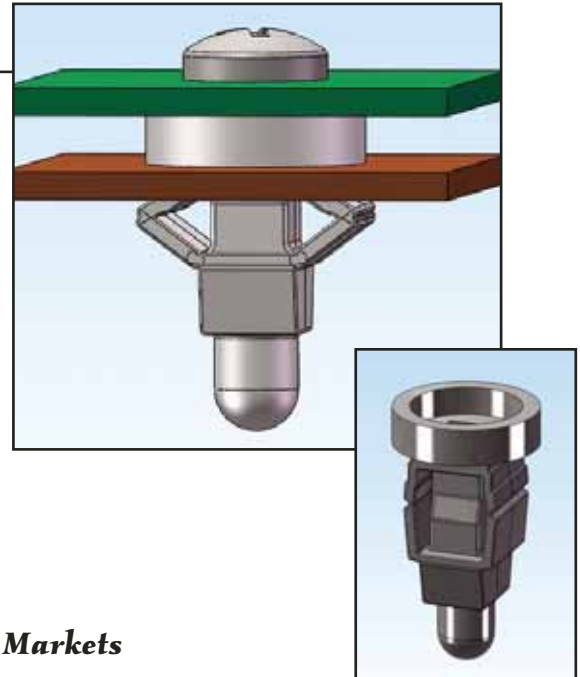


Introducing the *TFR*— Toggle Screw Grommet

Features and Benefits

- M4 Metal self-tapping screw is installed, the grommet expands and securely locks the screw and assembled parts in place
- Spreads load over a wide area
- Grommet legs are forced outward to help seal the mounting hole against dust and moisture
- Square hole mounting prevents rotation
- Parts are molded in natural color in durable UL94 V2 Nylon 6/6
- The part snaps in place first for ease of assembly and screw installation



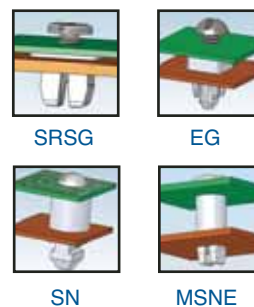
| Material: UL94 V2 Nylon 6/6, RMS-01 Color: Natural | | | |
|--|-----------|---------------|-----------------|
| Part Number | "A" ± 0.3 | Mounting Hole | Panel Thickness |
| TFR-1 | 0.8 | 8±0.1 | 0.5 - 2.5 |
| TFR-2 | 3.2 | | |
| TFR-3 | 4.8 | | |
| Accepts Metal Self-Tapping Screw Size M4 | | | |



Markets

- Automotive
- Brown Goods
- White Goods
- Office Equipment
- Telecommunications Equipment
- Security Systems

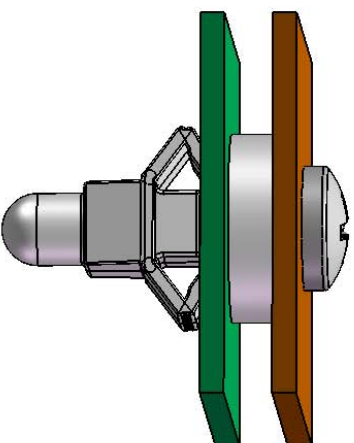
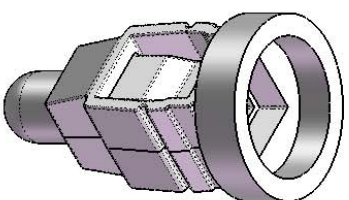
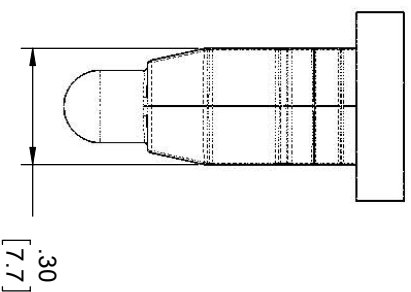
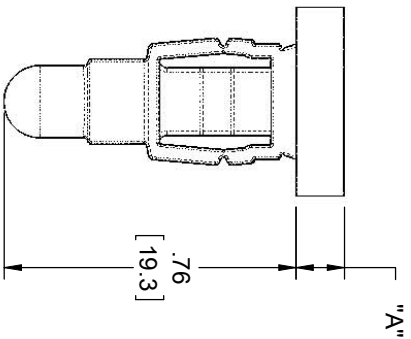
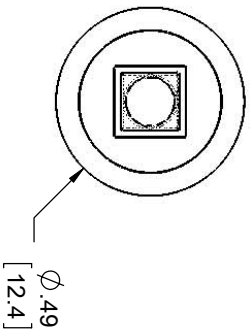
Other Related Richco Product Solutions



FOR FURTHER INFORMATION AND FREE SAMPLES PLEASE CONTACT YOUR LOCAL RICHCO OFFICE

| | | | |
|----------------------|-----------------------|---------------|------------------------|
| Richco UK (Int'l HQ) | Tel: (44) 1474 327527 | Richco France | Tel: (33) 47208 7140 |
| Richco Benelux | Tel. (31) 334556262 | Richco Spain | Tel. (34) 90222 2250 |
| Richco Germany | Tel. (49) 8171 43280 | Richco Italy | Tel. (39) 051 6325 266 |
| Richco Finland | Tel. (358) 925221500 | Richco Sweden | Tel. (46) 845 99800 |

| PART NO. | "A" ±.010 | MOUNTING PANEL THICKNESS |
|----------|-------------|--------------------------|
| TFR-1 | .031 [0.80] | .060-.110 [1.5-2.8] |
| TFR-2 | .125 [3.2] | .020-.110 [0.5-2.8] |
| TFR-3 | .189 [4.8] | .020-.110 [0.5-2.8] |



- NOTES:
1. MATERIAL: NYLON 6/6 UL94 V-2 (RMS-01)
 2. COLOR: NATURAL
 3. MOUNTING HOLE: .315 ±.004 [8 ±0.1] SQUARE HOLE
 4. USE #8 SELF THREADING SCREW
 5. ALTERNATE UNITS FOR REFERENCE ONLY

TITLE: TOGGLE SCREW GROMMET

| | | | | | | | | | | |
|----------------------------|---|------------------|-------------|------------|--------------------|--|----------------|--|------------|--|
| GENERATED USING SOLIDWORKS | | FILE #: TFR | DWN: S.J. | APP: S.J. | PART # | | DWG IN IN [MM] | | FINAL | |
| TOLERANCES UNLESS NOTED | | SHEET: 1 OF 1 | DT: 8.13.07 | CHKD: S.K. | RE: RICHCO, INC. | | PART # | | PRINT TYPE | |
| XX±.010 | | SHEET SIZE: A | | | RICHCO, INC. | | SEE TABLE | | CA | |
| XXX±.005 | | RE: RICHCO, INC. | | | ENG@RICHCO-INC.COM | | | | | |
| FRACTION ±1/64 | | | | | (773) 539-4060 | | | | | |
| ANG ±1° | | | | | | | | | | |
| B | SEE CO 200107 FOR CHANGES RELEASED FOR PRODUCTION | SK | 01/16/08 | ENGR | DATE | | | | | |
| A | | SK | 08/15/07 | | | | | | | |
| REV. | DESCRIPTION | ENGR | DATE | | | | | | | |