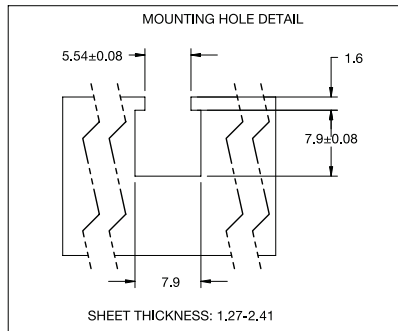
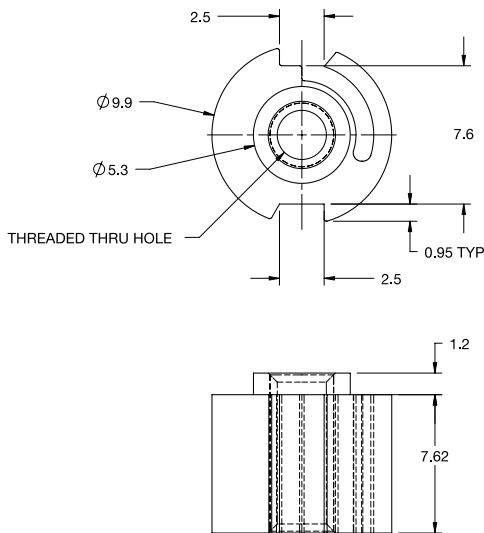
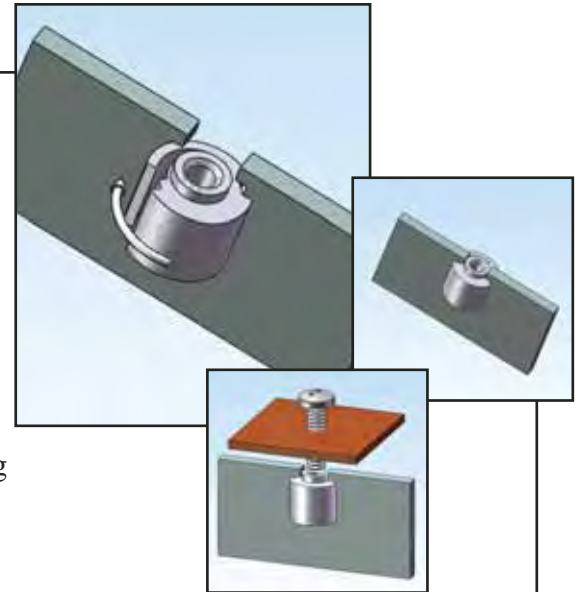


Introducing the *SEI*— Sheet Metal Edge Fasteners

Features and Benefits

- Provides strong threads in metal sheets too thin to be tapped
- Reduces hardware
- Allows for right angle assemblies
- Alternate to self-clinching fasteners
- Easily installed by rotating in the side of the panel
- Available in two internal threads; #6-32 and M4
- Can be easily removed by pinching the spring leg and rotating



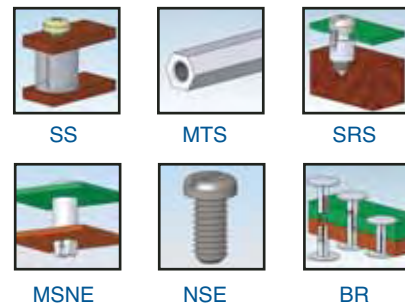
Markets

- Automotive
- Telecommunications
- Computers
- Consumer Electronics

SEI	Standard Pack: 1,000 per bag
Material: UL94 V2 Nylon 6/6, RMS-01 Color: Black	Thread Type
SEI-1	#6-32 UNC
SEI-2	M4
Tool Required for Screw Installation	



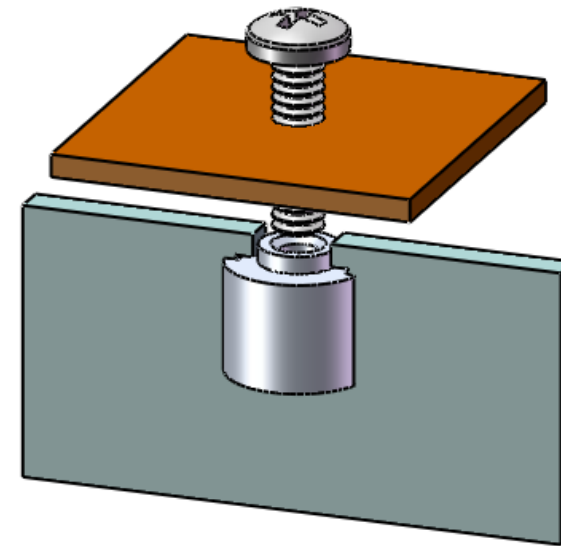
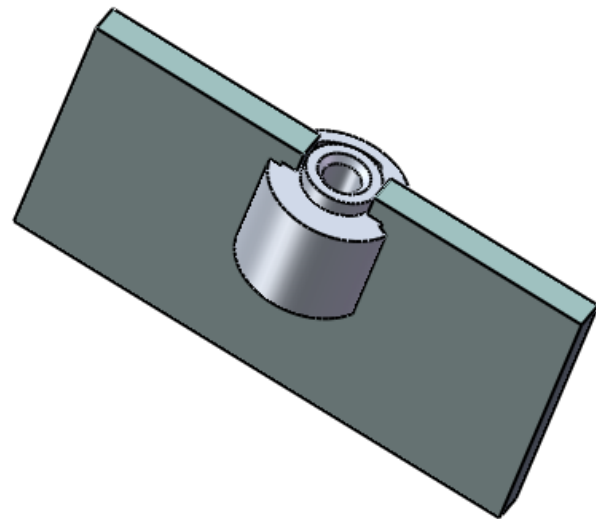
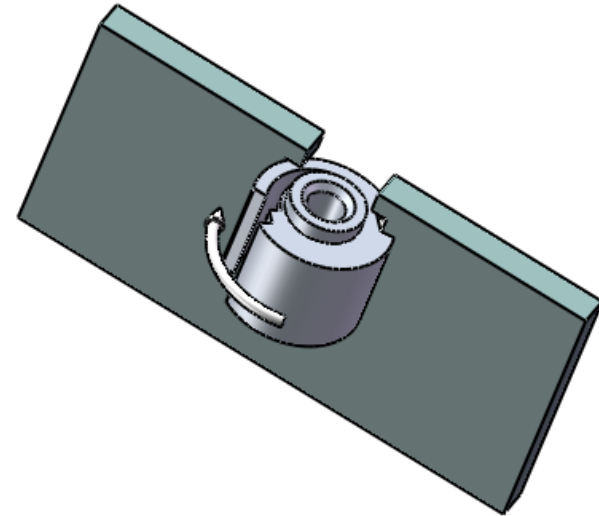
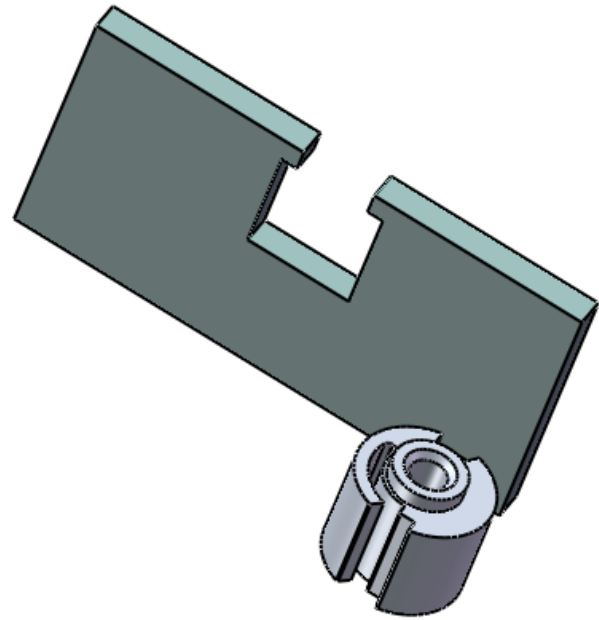
Other Related Richco Product Solutions



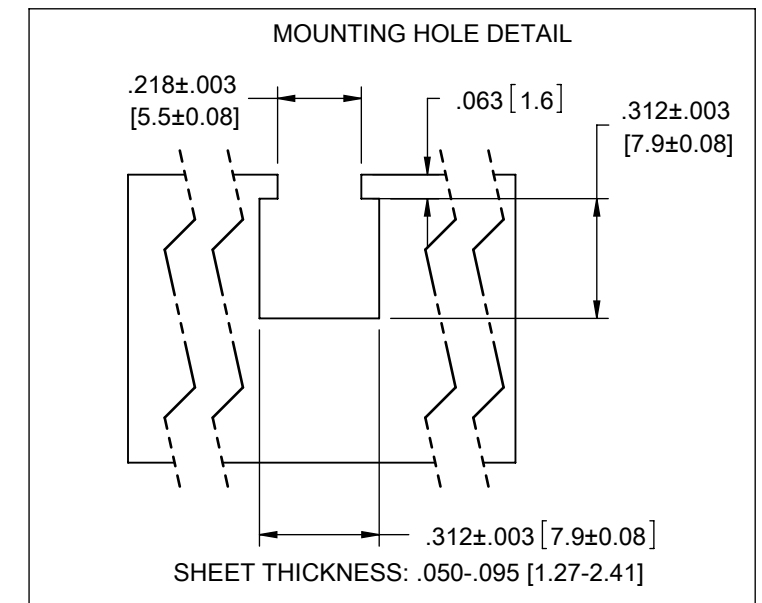
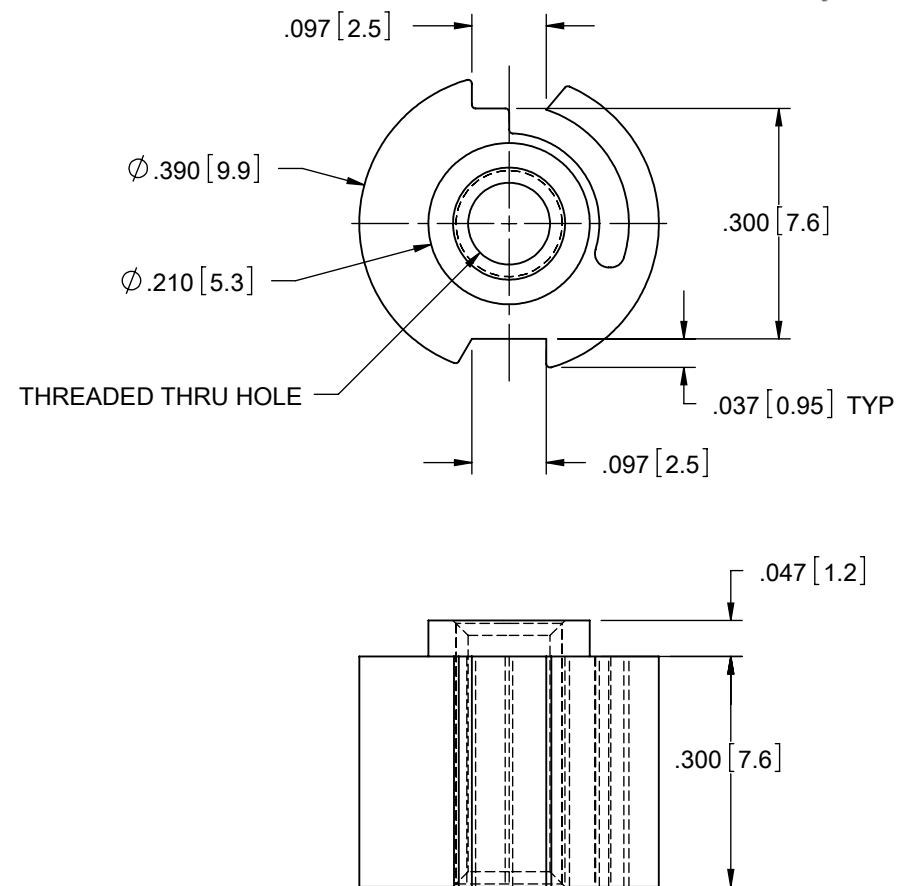
FOR FURTHER INFORMATION AND FREE SAMPLES PLEASE CONTACT YOUR LOCAL RICHCO OFFICE

Richco UK (Int'l HQ)	Tel: (44) 1474 327527	Richco France	Tel: (33) 47208 7140
Richco Benelux	Tel. (31) 334556262	Richco Spain	Tel. (34) 90222 2250
Richco Germany	Tel. (49) 8171 43280	Richco Italy	Tel. (39) 051 6325 266
Richco Finland	Tel. (358) 925221500	Richco Sweden	Tel. (46) 845 99800





PART NO.	THREAD TYPE
SEI-1	#6-32 UNC
SEI-2	M4



NOTES:
 1. MATERIAL: NYLON UL 94 V-2 (RMS-01)
 2. COLOR: BLACK.

REV.	DESCRIPTION	ENGR.	DATE
A	RELEASED FOR PRODUCTION	SK	XX.XX.XX

TITLE: SHEET EDGE INSERTS				DWG IN IN [MM]		PRELIMINARY	
CREATED USING SOLIDWORKS	FILE #: SHI-X	DWN: SK	APP:				
TOLERANCES UNLESS NOTED .XX=±.010 .XXX=±.005 FRAC.=±1/64 ANG.=±1°	SHEET: 1 OF 1	SHEET SIZE: B	DT: 09/12/07	CHKD:	PART #		PRINT TYPE
	RE: RICHCO, INC.		RICHCO, INC. ENG@RICHCO-INC.COM (773) 539-4060		SEE TABLE		CA